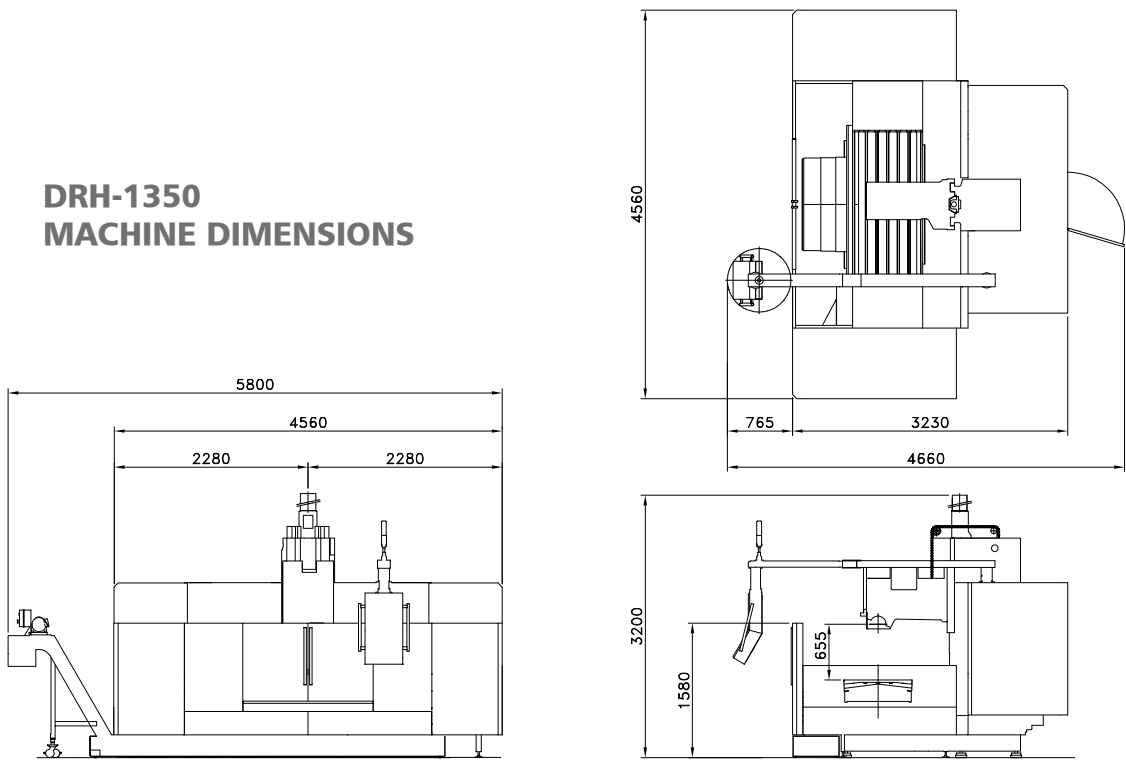
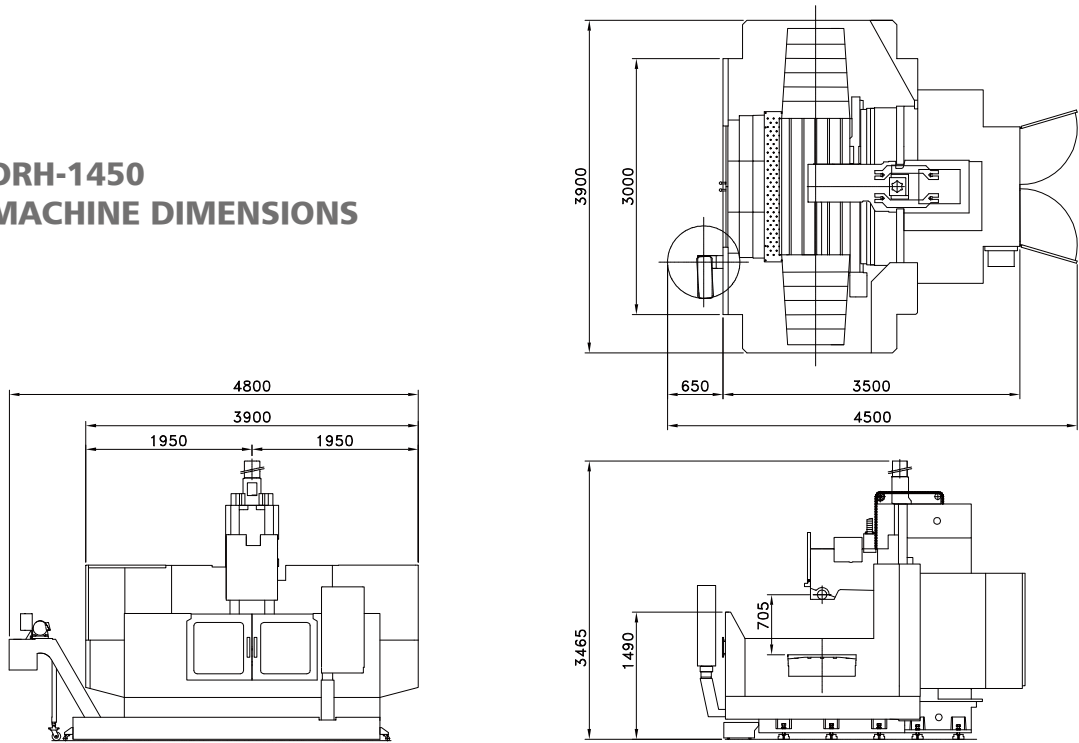


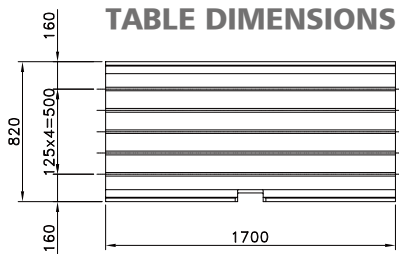
DRH-1350
MACHINE DIMENSIONS



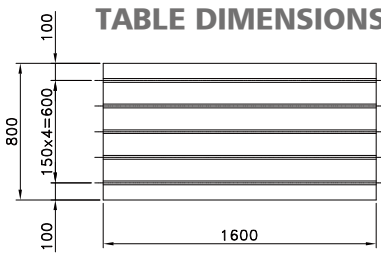
DRH-1450
MACHINE DIMENSIONS



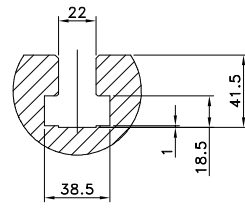
DRH-1350
TABLE DIMENSIONS



DRH-1450
TABLE DIMENSIONS



T-SLOT
DIMENSIONS



SPECIFICATIONS, ACCESSORIES AND DIMENSIONS

SPECIFICATIONS

MODEL	UNIT	DRH-1350	DRH-1450
TABLE			
Table surface area	mm (inch)	1700x820(66.92x26.77)	1600x800(62.99x31.50)
T-slot (Width x number)	mm (inch)	22 x 5 (0.86 x 5)	
Max. table load	kgw (lbs)	1500 (3300)	2000 (4400)
TRAVEL			
Longitudinal travel (X axis)	mm (inch)	1350 (53)	1450 (57.09)
Cross travel (Y axis)	mm (inch)	630 (24.80)	660 (25.98)
Spindle head vertical travel (Z axis)	mm (inch)	400 (15.7)	450 (17.72)
Distance from horizontal spindle to table surface	mm (inch)	255~655 (10~25.8)	255~705 (10~27.76)
SPINDLE			
Tooth module		M0.5~M12	
Applicable hob diameter	mm	Ø115 x Ø180	
Arbor diameter	mm	Ø40h6	
Fixing key for hob and arbor engagement	mm	10 (W) x 8(H)	
Arbor speed (Variable)	R.P.M	0~180	
Max. hob width	mm	68	
FEED			
Cutting feed rate	mm/min (inch/min)	1~4000 (0.04~157)	
Rapid traverse rate	mm/min (inch/min)	10000 (394)	
Minimum input increment	mm (inch)	0.001 (0.0001)	
MOTOR			
Spindle motor	Continuous	Kw (HP)	11 (15)
	30 min.	Kw (HP)	15 (20)
Servo motor (X, Y & Z axes)	Kw (HP)	3.0 (4.0)	4.0(5.4), 7.0(9.4), 3.0(4.0)

Specifications are subject to change without prior notice.

» STANDARD

- Heat exchanger
- Removable manual pulse generator
- Side flushing on spindle head
- Spiral type chip conveyor
- Semi-enclosed splashguard
- RS-232 interface
- Automatic power-off
- Call light
- Automatic lubrication equipment
- Work light
- Tool box and tool kit
- Spare fuses
- Pendant type operator panel
- Cutting fluid cooling and filtrating device

» OPTIONS

- Flat type magnetic chip conveyor
- Coolant and air guns
- Linear scales on 3 axes
- Permanent type magnetic chuck
- Full guard

MCV-860

MCV-1060

CNC RACK HOBBING MACHINE

MCV-1200

DRH-1350
DRH-1450

MCV-1250

MCV-1450

MCV-1680

MCV-1700

MCV-2100

MCV-2600

DCM-2213

MCH-630



DAH LIH MACHINERY INDUSTRY CO., LTD.

No. 3, Kung-Yeh Lane, Fengcheng Road, Nanshih Village,
Wufeng District, Taichung City, 41357, Taiwan.

TEL:886-4-23334567 FAX:886-4-23307567

E-mail:export.sale@dahliah.com.tw Http://www.dahliah.com.tw



022-2-00-026

1000, 11, 2016

The Latest and Best Quality Machinery.

DAHLIH®

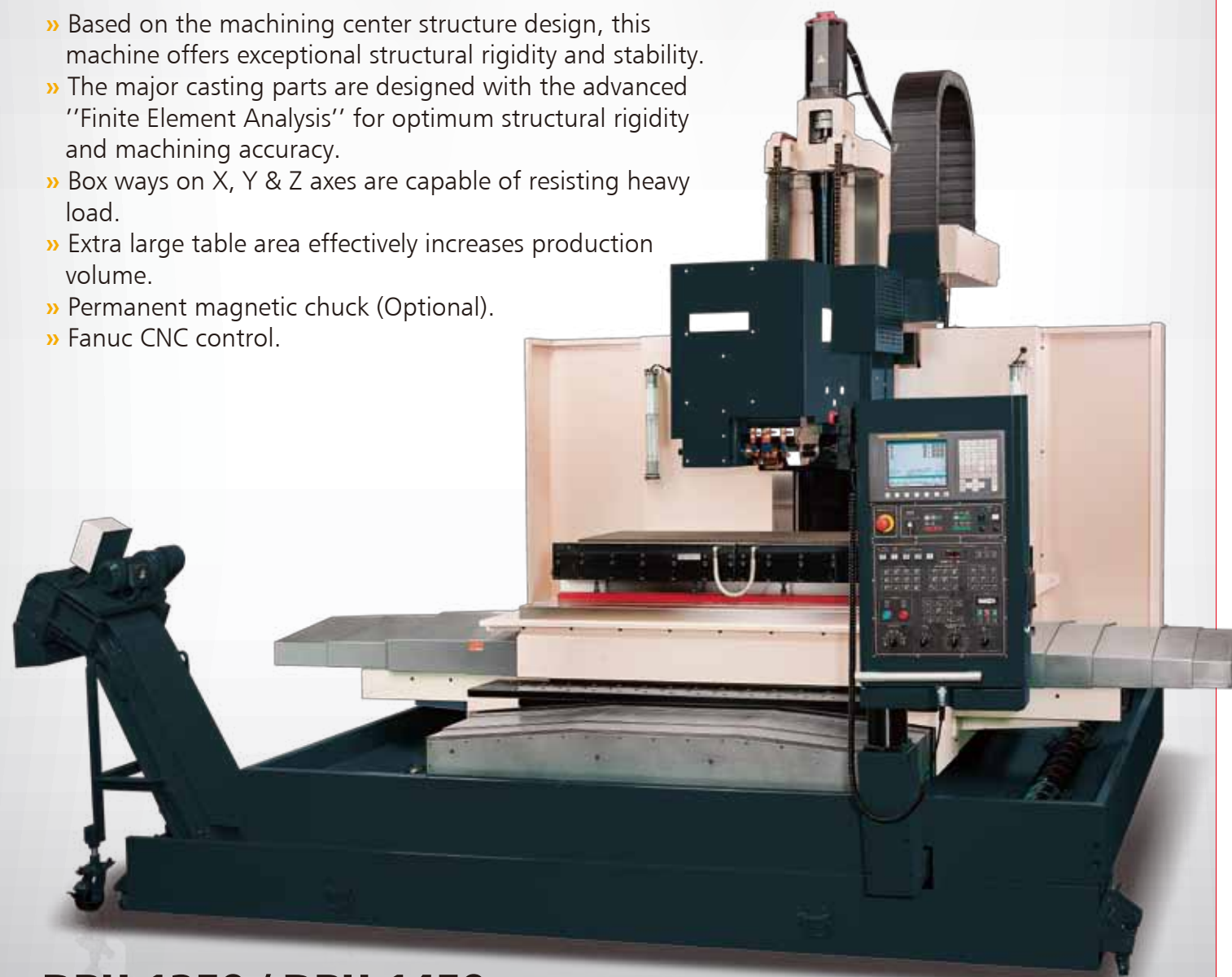
Dah Lih DRH Series CNC Rack Hobbing Machine

**Tooth Module M0.5~M12
High Accuracy! Low Backlash!**

Designed with the concept of vertical machining center's structure, Dah Lih DRH series features unmatched tooth accuracy and efficiency compared with conventional rack hobbing machines.

Machine features:

- » Based on the machining center structure design, this machine offers exceptional structural rigidity and stability.
- » The major casting parts are designed with the advanced "Finite Element Analysis" for optimum structural rigidity and machining accuracy.
- » Box ways on X, Y & Z axes are capable of resisting heavy load.
- » Extra large table area effectively increases production volume.
- » Permanent magnetic chuck (Optional).
- » Fanuc CNC control.



DRH-1350 / DRH-1450



Advanced Structure Design The Ultimate of Stability

High Quality Cast Iron

- » All structural parts are manufactured from high quality cast iron, assuring the best structure stability.

Massive Column and Base

- » The box type column and base have symmetrical construction featuring high rigidity and no deformation year after year.

Box ways on 3 axes

- » X, Y & Z axes are all designed with box ways to resist heavy load and exhibit superior stability in heavy cutting.

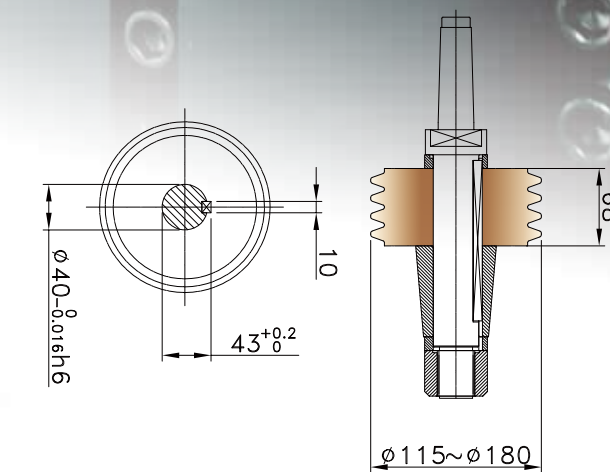
Chip augers

- » This machine is equipped with chip augers on both sides of the base for removing chips at any time during the machining process.



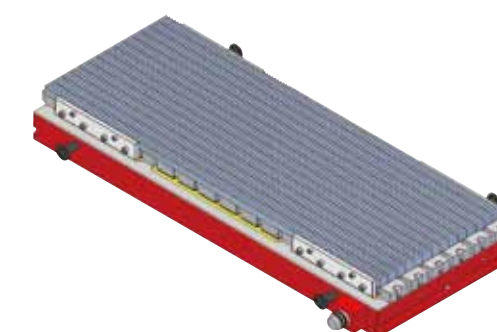
Spindle head

- » The spindle is transmitted through a gearbox providing torque output up to 1326Nm, making the machine perfect for heavy cutting.



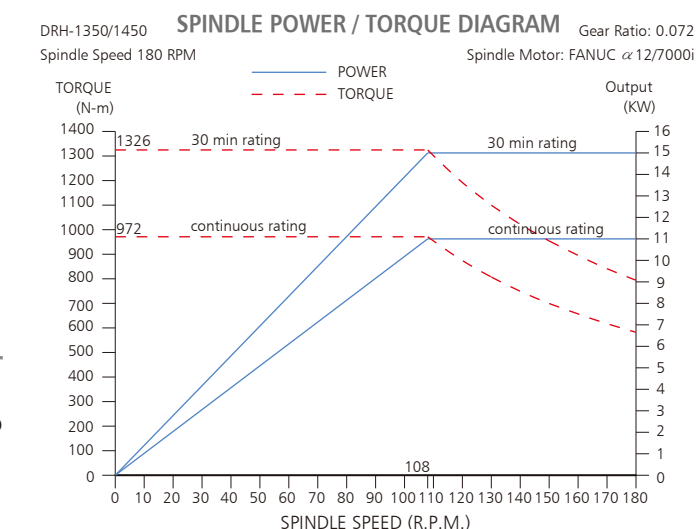
Hob arbor

- » Standard hob arbor diameter is $\phi 40\text{mm}$ (h6).
- » Specific arbor diameter is available upon request.



Permanent magnetic chuck (Optional)

- » The permanent magnetic chuck uses magnetism to hold workpieces securely, providing fast loading and unloading.





DAH LIH MACHINERY INDUSTRY CO., LTD.

MCV-860

MCV-1060

MCV-1200

MCV-1250

MCV-1450

MCV-1680

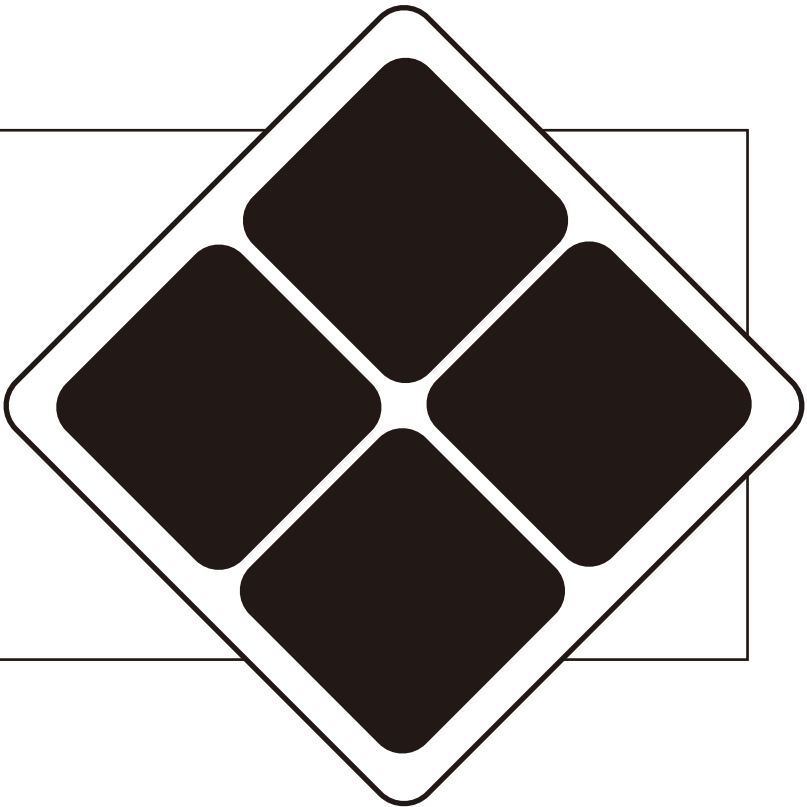
MCV-1700

MCV-2100

MCV-2600

DCM-2213

MCH-630



The Latest and Best Quality Machinery.

DAHLIH[®]